



**FRIENDS OF
DEAL ISLAND**



**General Meeting & AGM
30 August 2024**

Acknowledgement of Country

Today we gather on the traditional lands of the Tyerrernotepanner (chera-noti-pahner) people of the North Nation who belong to the land from the Central Plateau to the Eastern Tiers including present day Ross

We acknowledge and respect the deep connection that Tasmanian Aboriginal people have to Country and Culture.

We acknowledge the continuing connection to land, seas, air and waterways.

We honour Elders past and present.



Agenda

10.30 Acknowledgement of country & Welcome

Aologies- Anne Goldizen, Jo Burke, Sue Robinson, Gabrielle Balon, Lily Neyland, Peter Saunders, Tom Finney, Mike & Jane Comfort, Alison & Angus Moore, Maggie-Rose & David Gilligan, Chris Sedevic,

Bruce & Kate Frankcombe - possibly - current caretakers

10.40 General Meeting

Weeding Journey

Ragwort Beetle Project

12-1 Lunch

1.00 AGM

1.30 Committee gathering

Ragwort Beetle Project

It had been evident for a long time that we were facing a losing battle with Ragwort on Deal Island, that working bees alone were insufficient to control the spread of ragwort on island.

We started exploring options back in 2022 with conversations and research around options.

John Ireson aka the Ragwort guru confirmed that any chance of success would be to revisit biological controls and that unfortunately Ragwort flea beetle and plume moths could no longer be sourced by simply ordering them as they were once able to a decade or so ago and we now had to source in the wild, collect and transfer

We put the word out through various sources we were hunting beetles to collect - Though Phil Wyatt (mapping extraordinaire) we were able to contact the Kingborough Council who's weed officer had been involved in Ragwort control on Bruny Island and was happy to help.

Engaged - John Ireson to consult with the assessment of viability to harvest and transfer beetles

Jan 2023 - Stuart & John Ireson visited several sites on Bruny to assess viability and found healthy populations on 2 of the 4 sites visited and determined there were sufficient numbers to proceed with the project

May - 2023 Project assessment submitted to PWS for approval

Oct 2023 - Submitted a grant application to Wettenhall Environment Trust for \$4510 to fund the project

Nov 2023 - Grant approved and Project approval received from PWS

Release sites investigated on island on Nov working bee and area pegged out

Collection of Beetles

Purchased a stihl shredder vacuum to assist with collection of beetles prior to Four FODI members - Stuart, Casie, Mke & Jane and our Ragwort maestro John Ireson and his wife Angela travelled to bruny on 15th of January.

We sampled 5 Bruny Is sites collecting around 50 beetles only (Luckily two days prior to that John and Angela had gone to Franklin and collected 200 in the space of an hour before the 2 stroke vacuum he uses stopped functioning)

So with only 250 beetles in total we left bruny and returned to the Franklin site to try for more....after another 2 hours we had collected 400 beetles ready for transport to deal island.

John had determined that this was sufficient numbers to establish a population on Deal and worthwhile continuing.



How do you collect the beetles????

1 Check for shot holes as evidence of beetles in the area

2 Vacuum over multiple plants

3 Empty collection into sorting tray

4 Extract individual beetles..

repeat..

The Journey

After an overnight stop in the Midlands it was off to Barnbougle to meet up with Jo for the flight to Deal

By 1230 we had arrived on Deal headed out to the predetermined release site at Winter Cove with caretakers Ali & Apanie

Choosing two juicy rosettes we released the 400 or so beetles by tapping the kitchen towel onto the rosettes..

The beetles were literally jumping with joy.





Where to from here..

We see this as a long term project

- Nov working bee will take the Ragwort Plume moth
- Jan 2025 a yr after release will show if successful in stage 1
- We will need to continue to focus on outliers
- 3-5 yrs should see movement outside release area

Early signs are good though - March 2024 working bee found shot holes in

Ragwort 500m from the release site

Big thanks to all involved

Thanks also to Wattenhall Environmental Trust & Wildcare Nature Conservation Grants



PWS Update - from Dominique Cozens RIC

Thank You

- I would like to thank the FODI team who has assisted PWS with ongoing maintenance on Deal Island this year
- Re-painting of assets that assist in not just the maintenance of those assets but in prolonging the integrity of them.
- PWS staff & many caretakers have acknowledged the effort in FODI weed works jointly met with wild enthusiasm shown by FODI teams on island.
- Stuart & Jo Widdowson for their amazing work pulling together the Ragwort biological control project and making it happen! What an incredible effort – those tiny, teeniest are hopefully enjoying their new home so let us see what magic they can spread.

Heritage

Exciting news - our Heritage section was successful with a bid for works and has secured funding to replace the roof of the museum. This will happen this summer as we now work through planning and quotes.

Anita Waghorn new PWS heritage officer will head to Deal Island later this year to finally pull together new heritage conservation works program plans . Hope that by mid-2025 PWS should have some updated conservation plans

PWS update - continued

Environmental waste assessment

- PWS engaged an environmental waste consultant to island who conducted an audit of all wastewater assets.
- Nothing urgent was found with a long-term suggestion of raised evaporation pads to be considered as well as replacing the terracotta pipe that runs from the PWS visitor house to the septic.
- This pipe will now be replaced in December, for those who are aware, in the meantime keep the hot soapy water dosage up upon arrival !

PWS caretaker program

- Caretaker program will be advertised again next year to fill from 2026 onwards for 3 yrs, three years. Judging by the interest and calibre of applicants from the last time we advertised we anticipate; we will have another great pool of new applicants.
- The program is aimed at providing a unique experience to like minded volunteers.
- If you have any members or friends interested ensure they are signed up in our 'better impact' PWS volunteer framework and keep an eye out through wild-care for the advertisement. I will update FODI president when this happens
- Past caretakers will not be assessed to ensure this amazing place is shared fairly to everyone. I am sure you all agree Deal Island and its archipelago of islands is an incredible place and a once in a lifetime experience.

Finally, whilst I cannot promise , it's on my radar that with any helicopter drops for project or resupply works a new sofa is long overdue in the PWS visitor house!

Dominique, RIC Deal Island.

President Report

- Apology 2 years since last AGM
- Highlights over the last two years
 - Wooden Boat Festival Feb 2023 - \$2400 raised - big thanks to Alison Moore - and all other volunteers over the 4 days lots of work but a great chance to come together with Friends of Tasman & Maat and to meet and talk to so many people about the work of both our branch and Wildcare
 - Working Bees - two per year great progress on weeds - per Stuarts presentation, painting/conservation of buildings
 - Ragwort Beetle project - grants, as discussed
 - Grants - Wildcare
- Thank you Stuart - Leadership on working bees, grant - Wildcare & execution of ragwort project
- Opportunities & Challenges - lets look at in where to from here/
 - Time..
 - What can we do differently going forward - zoom meetings?
 - In person - once a year?

Social media

Like most things this has also suffered from a lack of time this year however there have been posts especially around working bees etc

FB followers: 867 (from 116 in 2018)

Instagram 184 (started 2018)

Wildcare Branch membership: 221 (3rd largest branch)

Financials

Summary

Created: 5/08/2024 5:55 PM

WILDCARE Tasmania

GPO Box 1751
HOBART 7001

Jobs List

ABN: 80 986 531 989

Email: bookkeeper@wildcaretas.org.au

Job No.	Job Name	Income	Expense	Net Profit (Loss)
Deal Island	Friends of Deal Island	\$242,688.14	\$232,694.17	\$9,993.97
Deal TNCF 23	Deal TNCF 23 Weeds 23/24	\$9,400.00	\$4,700.00	\$4,700.00
DealGeneral	Friends of Deal Is (Gen)	\$59,932.41	\$54,638.44	\$5,293.97

Purchased - new pillows x 6 and a coffee perculator for FODI house also purchased 2 x books for island from FODI: Living with Jezebel- A life on Tasmanian & Bass Strait Islands and Safe Passage - The Lighthouses of Tasmania

ID No.	Src	Date	Their Inv/P.O.	Customer Name	Memo	Debit	Credit
Deal TNCF 23			Deal TNCF 23 Weeds 23/24				
00003856	PJ	1/03/2024	4616	Flinders Island Air Charter	FODI: Flights Charter	\$4,700.00	
						\$4,700.00	\$0.00

Beginning Balance : \$9,400.00
 Net Activity : -\$4,700.00
 Ending Balance : \$4,700.00

Deal WET 23			Deal WET 23 Ragwort				
00003795	PJ	21/01/2024	TASWEED	TasWeed Biocontrol	FODI: Ragwort Flea Beetle	\$681.82	
00003796	PJ	21/01/2024		Dudgeon, Stuart	FODI: Tool & Transport	\$390.00	
00003796	PJ	21/01/2024		Dudgeon, Stuart	FODI: Tool & Transport	\$46.00	
00003798	PJ	31/01/2024	4541	Flinders Island Air Charter	FODI: Charter Flight	\$3,000.00	
00003945	PJ	1/06/2024		Dudgeon, Stuart	FODI: Reimburse - Ferry Fare	\$46.00	
GJ000921	GJ	1/07/2024			Transfer of surplus grant funds to general funds.	\$346.18	
						\$4,510.00	\$0.00

Beginning Balance : \$4,510.00
 Net Activity : -\$4,510.00
 Ending Balance : \$0.00

DealGeneral			Friends of Deal Is (Gen)				
00003787	PJ	11/01/2024		Widdowson, Joanne	FODI: Reimburse - Postage & Books	\$132.68	
00003787	PJ	11/01/2024		Widdowson, Joanne	FODI: Reimburse - Postage & Books	\$9.91	
00003788	PJ	15/01/2024		Widdowson, Joanne	FODI: Reimburse - Supplies for visitors house	\$106.10	

Working Bee Report

Stuart Dudgeon has been the organiser and leader of the last 4 working bees with Georgie Dudgeon organising the food and Christine Bowman packaging and transporting the non-perishable food purchased on Flinders Island.

Tasks carried out over the last 2 years include:

- Painting exterior of the museum, fuel store & paint store
- Cleaning of museum gutters and repair
- De-moulding and painting interior of approximately half of communal areas of visitor house
- Application of fish oil to the Whim to slow down further deterioration from rust
- Painting has started on exterior of other outbuildings; generator shed and radio room
- Weeding continuing with a focus on sea spurge and ragwort at East Cove, surrounding Compound, Garden Cove, Winter Cove and checks at Little Squally, Big Squally and Pegleg Bay
- Weeding has transitioned from lots of weed removal to lots of monitoring in those same areas
- The exception to this is large Ragwort infestations above Winter Cove/Pegleg and west of runway (hence the introduction of Ragwort Biocontrol)
- Weed seed containment bin built (aka compostarium)
- Repair of fence and removal of wallabies in East Cove exclusion zone
- The assistance of caretakers in weed control has been much appreciated!

In progress:

- Bank stabilisation in East cove as sea spurge numbers reduce

Potential future works;

- vegetation management in Lighthouse zone to create a long-term manageable bushfire hazard management area
- Explore active revegetation of East Cove (seed collection & direct cuttings March, propagate in November, plant following March)

AGM Election

Committee

President - Jo Widdowson

Secretary - Cassie Strain

Treasurer - Stuart Dudgeon

Social Media - Tamara Terwal

Committee member - Georgie Dudgeon, Mike Comfort, David Butler, Lee Cameron

Outside committee roles

- Merchandise - Cathie Plowman
- Grants

Working Bees - propose sharing different roles- Co-ordinator, food person, on-island leader

General business

Proposed more regular meetings of the Committee via zoom as required, an AGM and a social gathering per year

Discussed the reason why working bee number is only 6 participants (primarily flight costs and weight limits) and continuation of asking \$100 per participant for flights

Other ideas for working bees to add as much 'value' as possible for the costs including; heritage work, erosion control, QR codes for visitors (ie interpretation)

Experienced working bee leaders - 3

Grants/fundraising/merch - suggested focusing on small easy cost-effective mailable merchandise (eg cards)

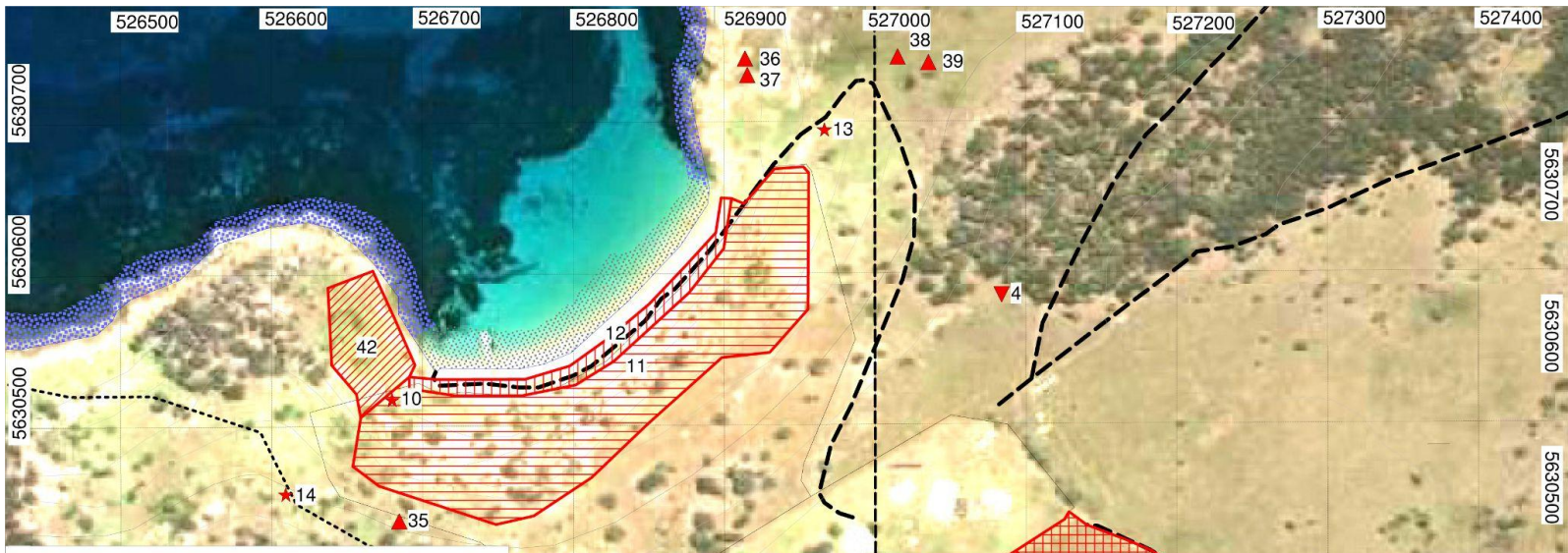
More involvement/sharing the load - Jo and Stuart have been the only active committee members recently, with Allison Moore handling the merchandise

Engaging caretakers ongoing - updating weeding info, thank you & invitation to join FODI ongoing

Nature Conservation Grants 2 Sept to 3 Oct



\$500 donation by David Reynolds - propose to use for a project or purchase a specific item

Broke into groups and discussed how a committee might look and other roles. Noting that many people either want to go on working bees or do other 'worthwhile' jobs as a way of keeping involved in FODI.





Deal Island weeds Oct 2023: East Cove and Compound


Sea spurge

-  Beach - 0.3 ha, mod density
-  Bank - 2.3 ha, low density
- ★ Sea spurge point id numbers

Ragwort

-  Compound south - 2.3 ha - mod density
-  Compound exclusion zone - 10.3 ha - low density
- ▼ Ragwort point id numbers

Horehound

-  East Cove - 0.3 ha - mod density

Arum lilly

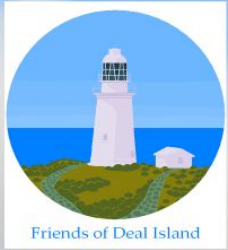
See spreadsheet for site number key:

Next slides are a presentation Bob & Penny put together several years ago.

We thought this was worth revisiting to :

- Pause to reflect
- Celebrate achievements
- Highlight the importance of continuing with the weeding program

A couple of more recent pics have been added here & there



CARING
FOR
OUR
COUNTRY

Weed Management on Deal Island Kent Group National Park

Penny and Bob Tyson
Wildcare Friends of Deal Island



Deal Island is managed by PWS and manned by volunteer caretakers.

Friends of Deal Island, a branch of Wildcare, work in partnership with PWS in weed management and maintenance of the light station and associated structures. A formal partnership is close to finalisation.

FoDI has over 100 members and aims to run two working bees per year, usually 15 days duration with 8 participants per visit.

FoDI raises funds through sale of calendars, cookbooks, and grants.

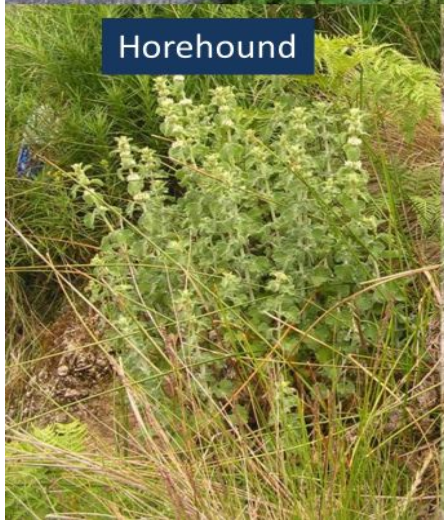
Weed management and revegetation has been supported by \$60,000 in grants over the last 4 years thanks to Envirofund, NRM North Landcare and Community scheme, and Caring for Our Country.



Arum Lily



Ragwort



Horehound



Sea Spurge



Great Mullein



Marram Grass



Variegated Thistle



Cumbungi



Jonquil



Slender Thistle

West Cove Erith Island



Sea Wheat Grass



Garden Stock



Kikuyu



Purple Groundsel





Friends of Deal Island

DEAL ISLAND WEED PLAN

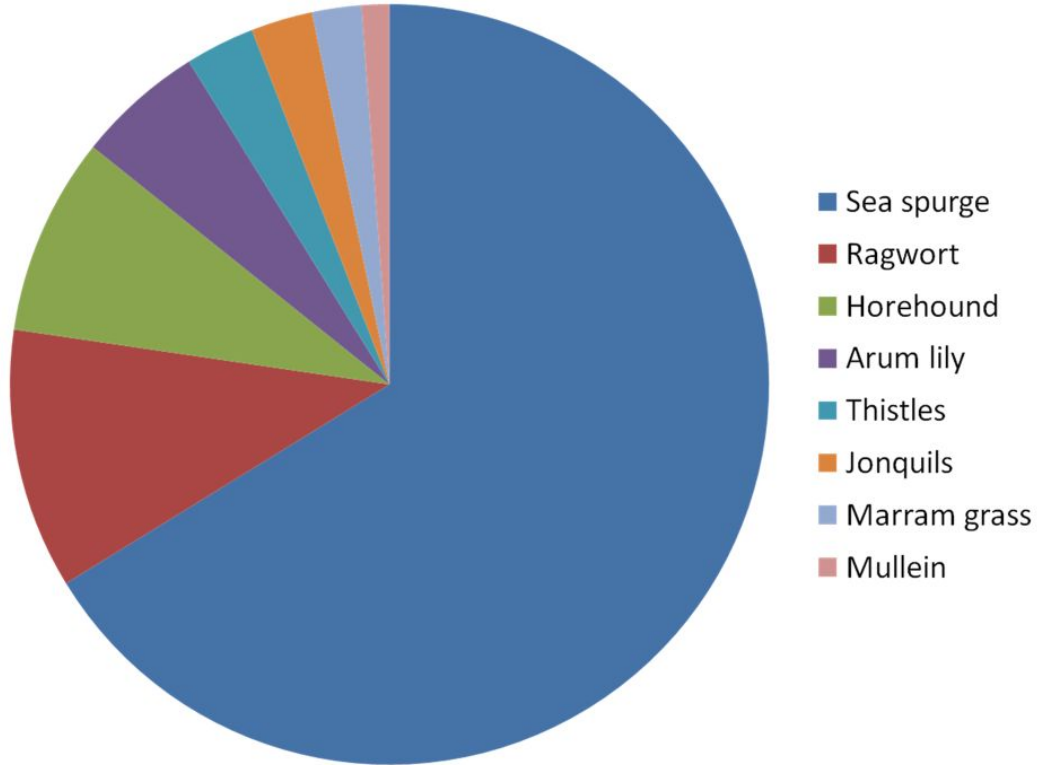


Penny Tyson
Volunteer Weed Planner
Friends of Deal Island – Wildcare Inc.
August 2009

Spraying ragwort



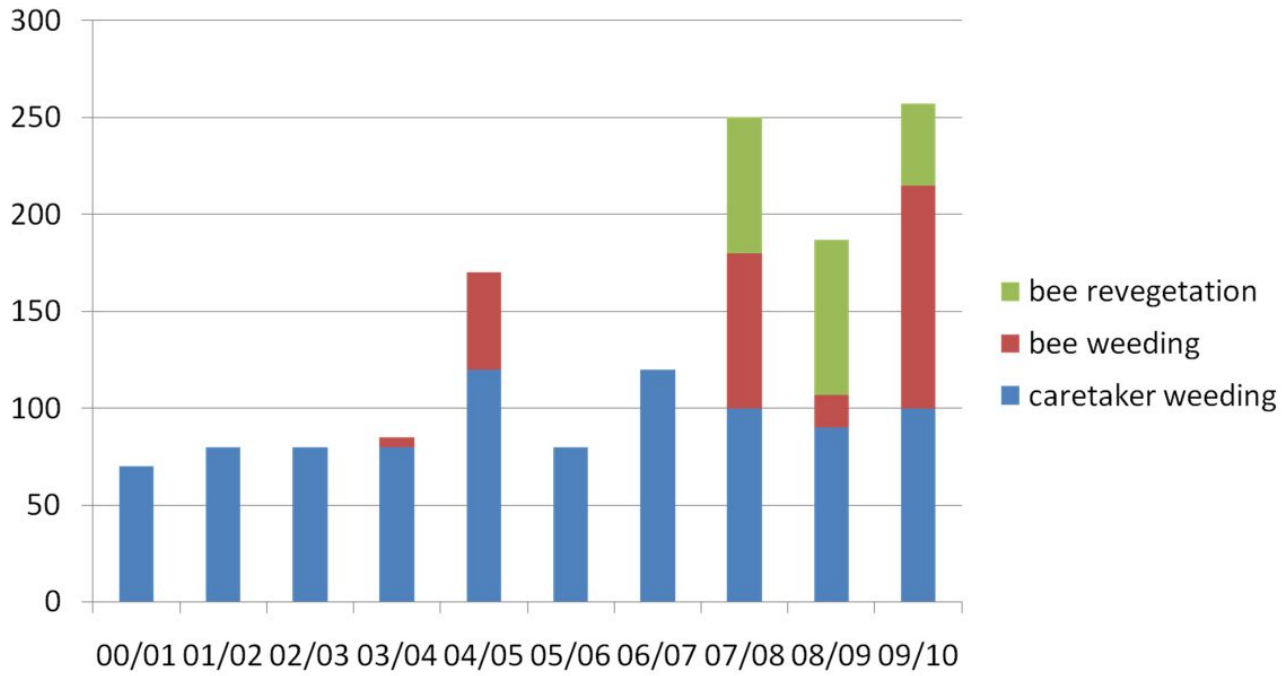
Weeding effort by species



Weed Management

- caretakers take on projects – built heritage, other assets, museum, etc
- some take on weed management, revegetation, and erosion control

Effort in person days for caretaker weed management; working bee weeding; and working bee revegetation (incl. fencing and erosion control)



Spurge plants in the cobbled beach on the eastern side of Squally Cove



Winter Cove, marram controlled, sea spurge controlled by monthly seedling pulls



Garden Cove: the infestation here has been reduced from 4.5 ha to less than 1ha.

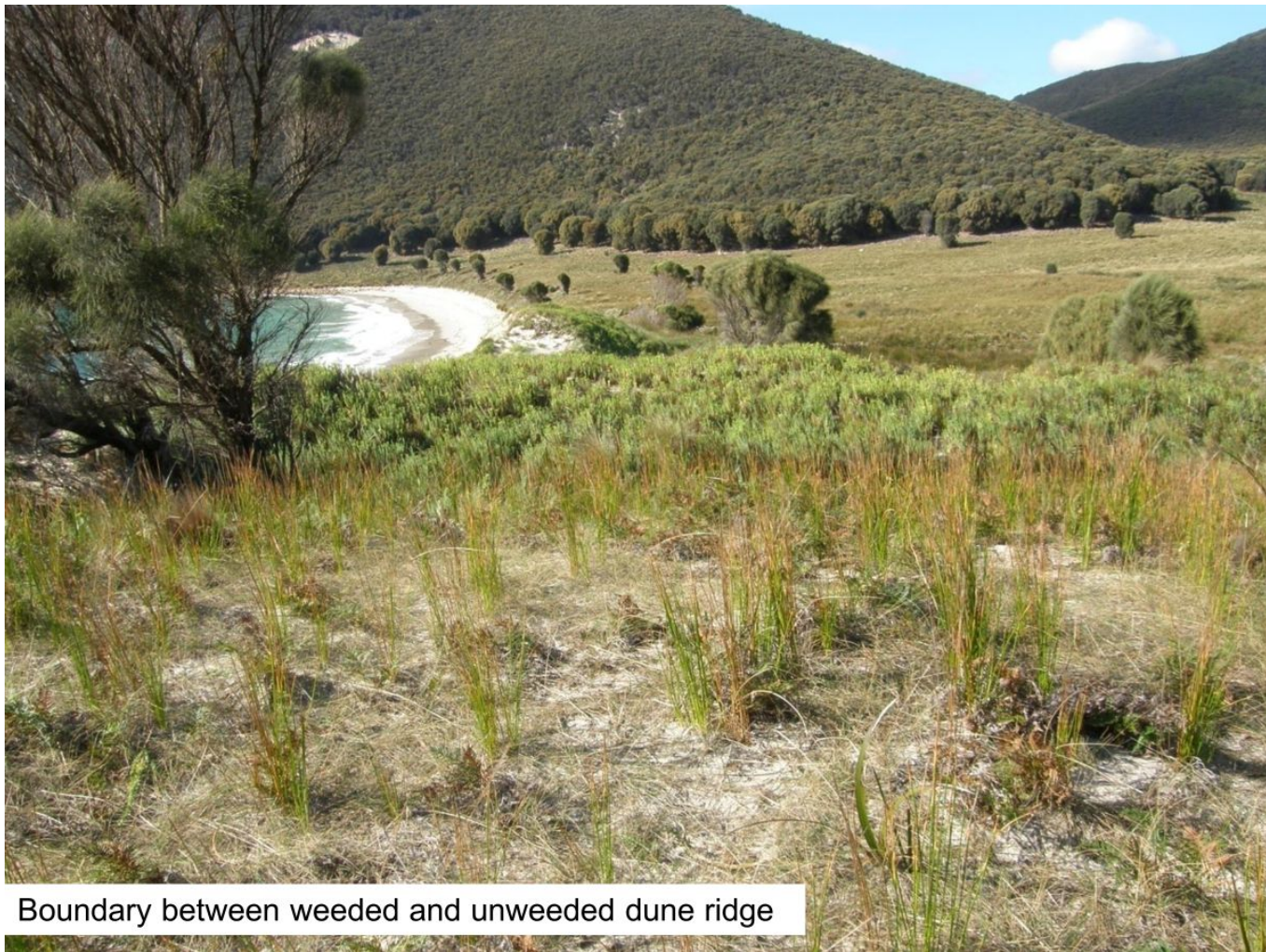




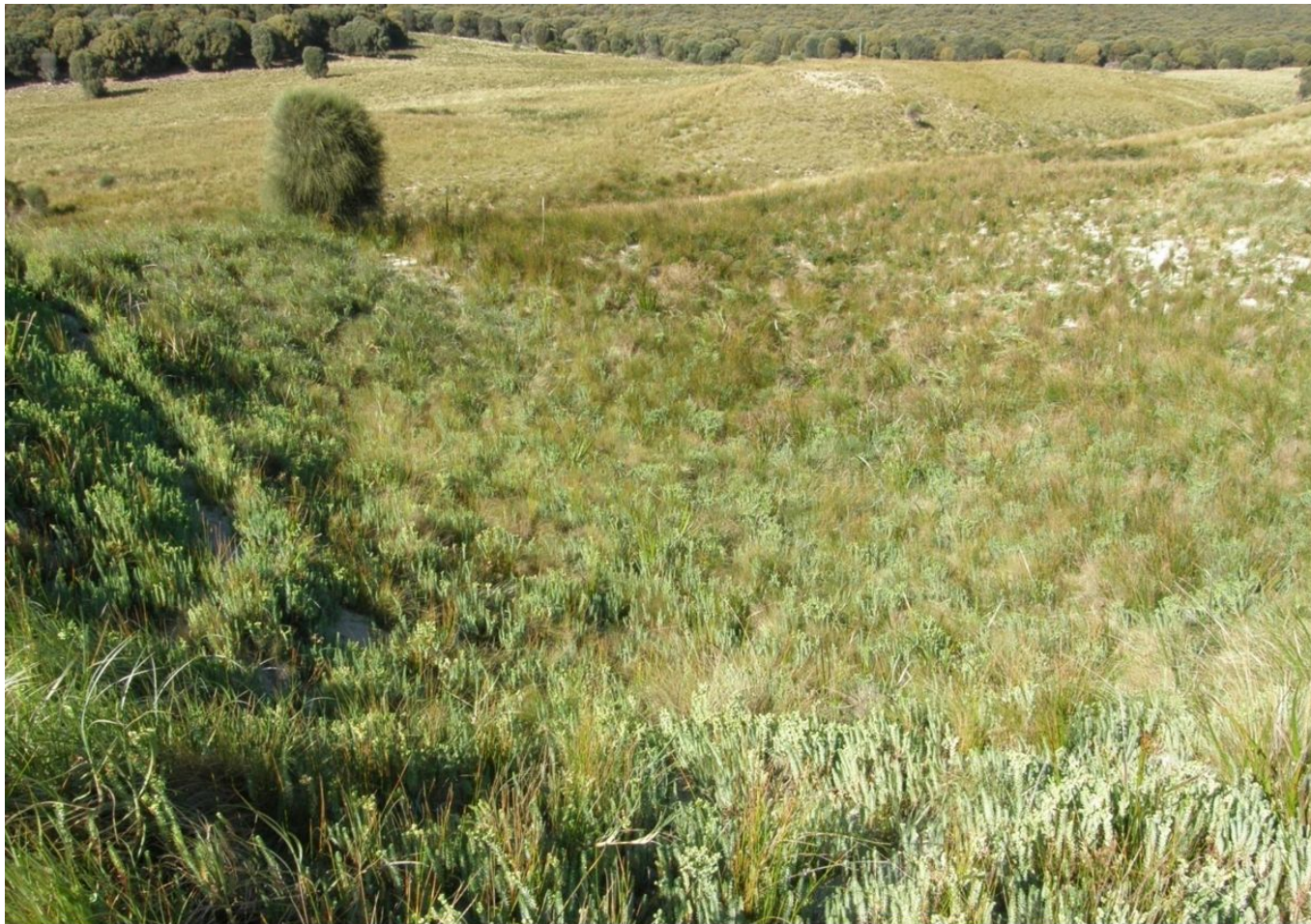
The steep seaward slope of one of the higher dunes with dense spurge.



And the wave cut sand scarp below.



Boundary between weeded and unweeded dune ridge



The sheltered rear surface of the dune has dense vegetation both native and spurge.



Weeding an outlier above Garden Cove.



Small outliers are difficult to find but have great potential to spread



All weed patches are now GPS'ed, mapped, and marked on ground with numbered stakes. Distant ones equipped with buoys for greater visibility



There are 20 outlier markers on the hillside west of the creek up to 70 m altitude.

Weeding in progress, Garden Cove near the creek mouth, May 2005



Secondary weeding, part of the same area, July 2006



Garden Cove April 2010 (before maintenance weeding)



2010 Looking west from the same place (before maintenance)





Denser small plants sprayed with glyphosate; cut and paste in sensitive areas.

April 2010 Spurge plants had developed seeds in the six months since last weeded. (Sea rocket also present.)



Seed was stripped from spurge and left in a 200 litre drum to rot in water





Poor weeding technique perhaps? No it was wallabies who graze select patches of spurge. One theory is that this is to control worms in their gut.

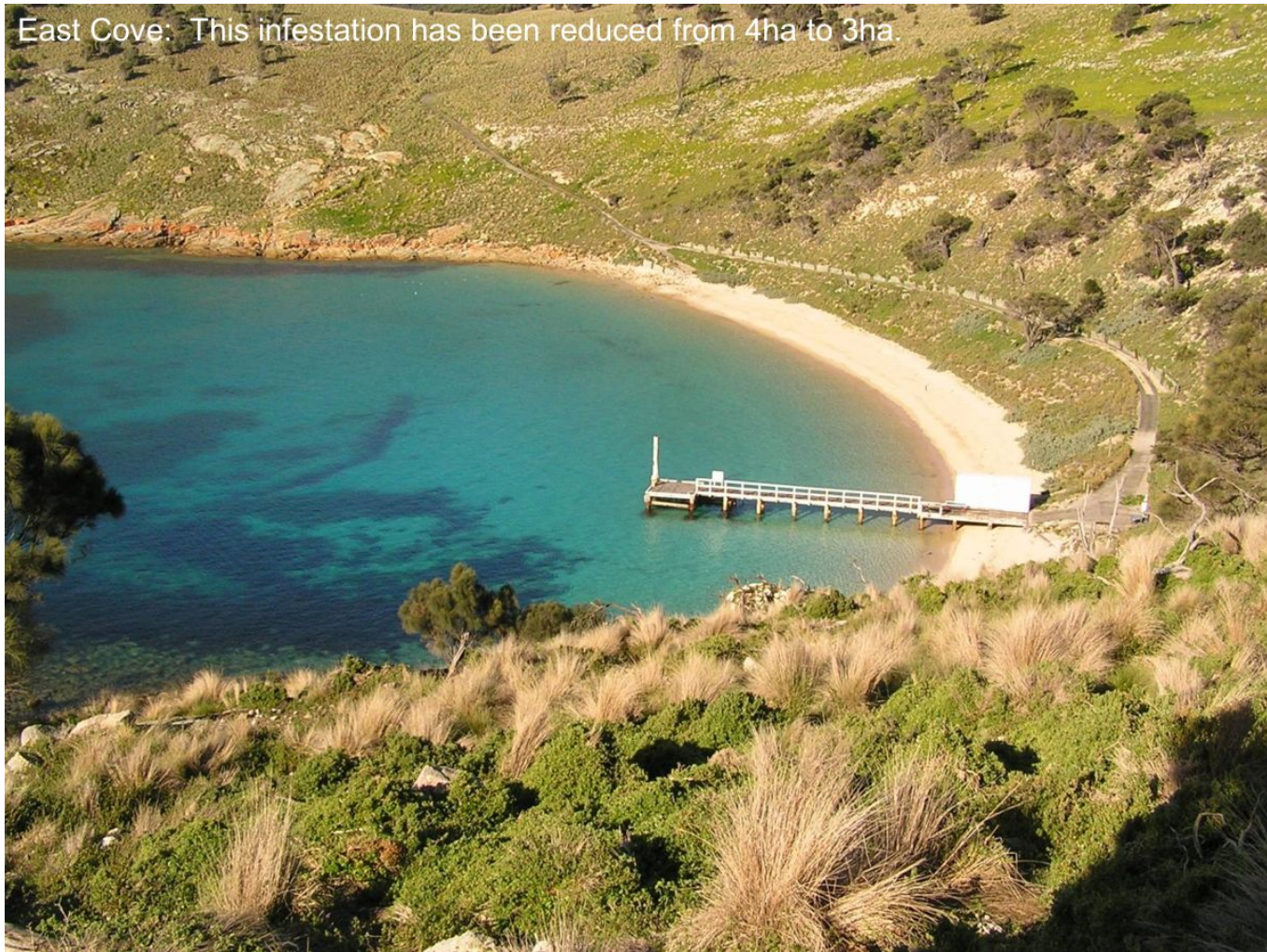


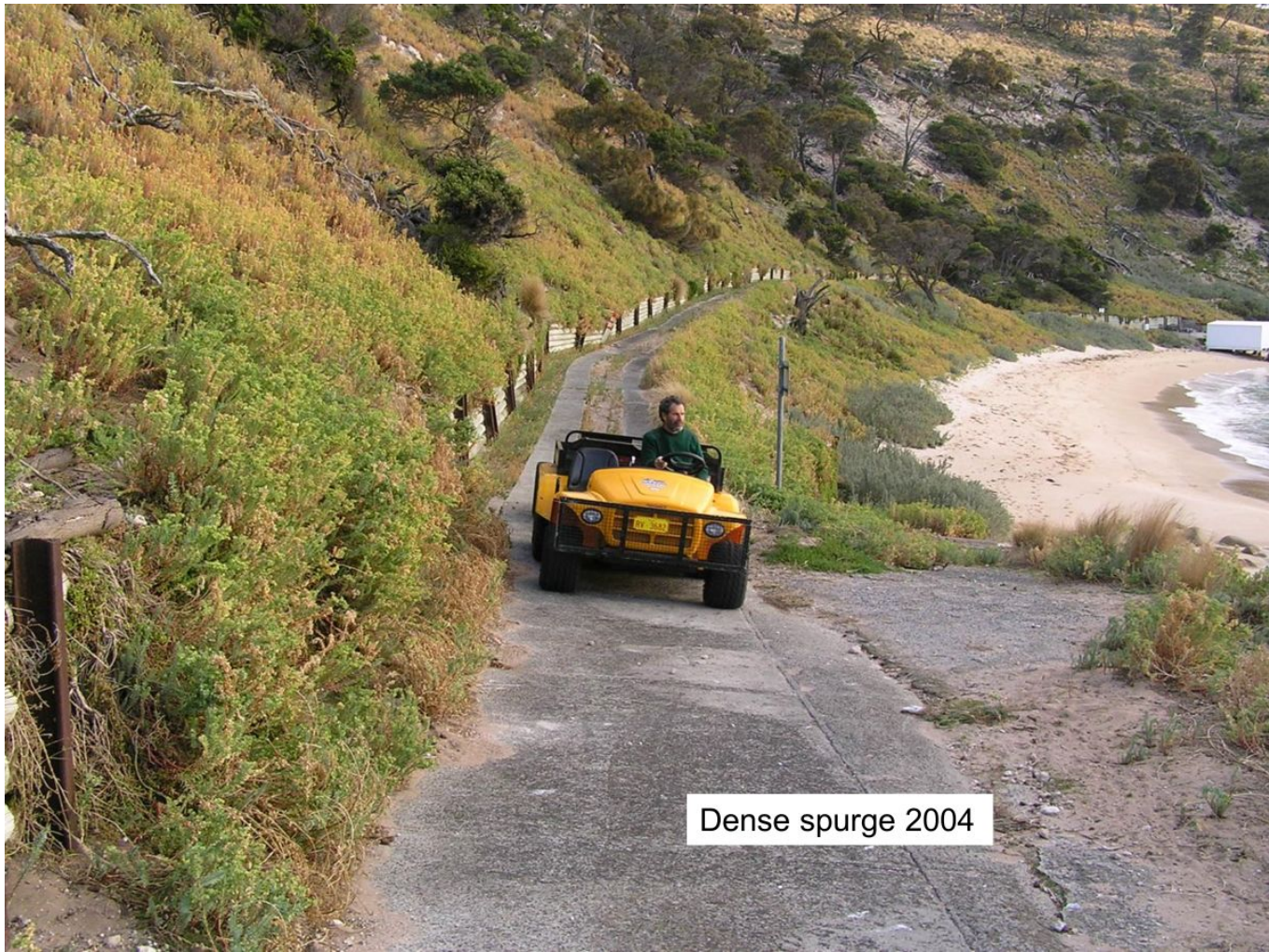


Poor weeding technique perhaps? No it was wallabies who graze select patches of spurge. One theory is that this is to control worms in their gut.



East Cove. This infestation has been reduced from 4ha to 3ha.





Dense spurge 2004



April 2008 working bee cleared the strip below the road to reducing seed reaching water. 20 cubic metres of spurge wrapped in plastic and left to solarise for 18 months.

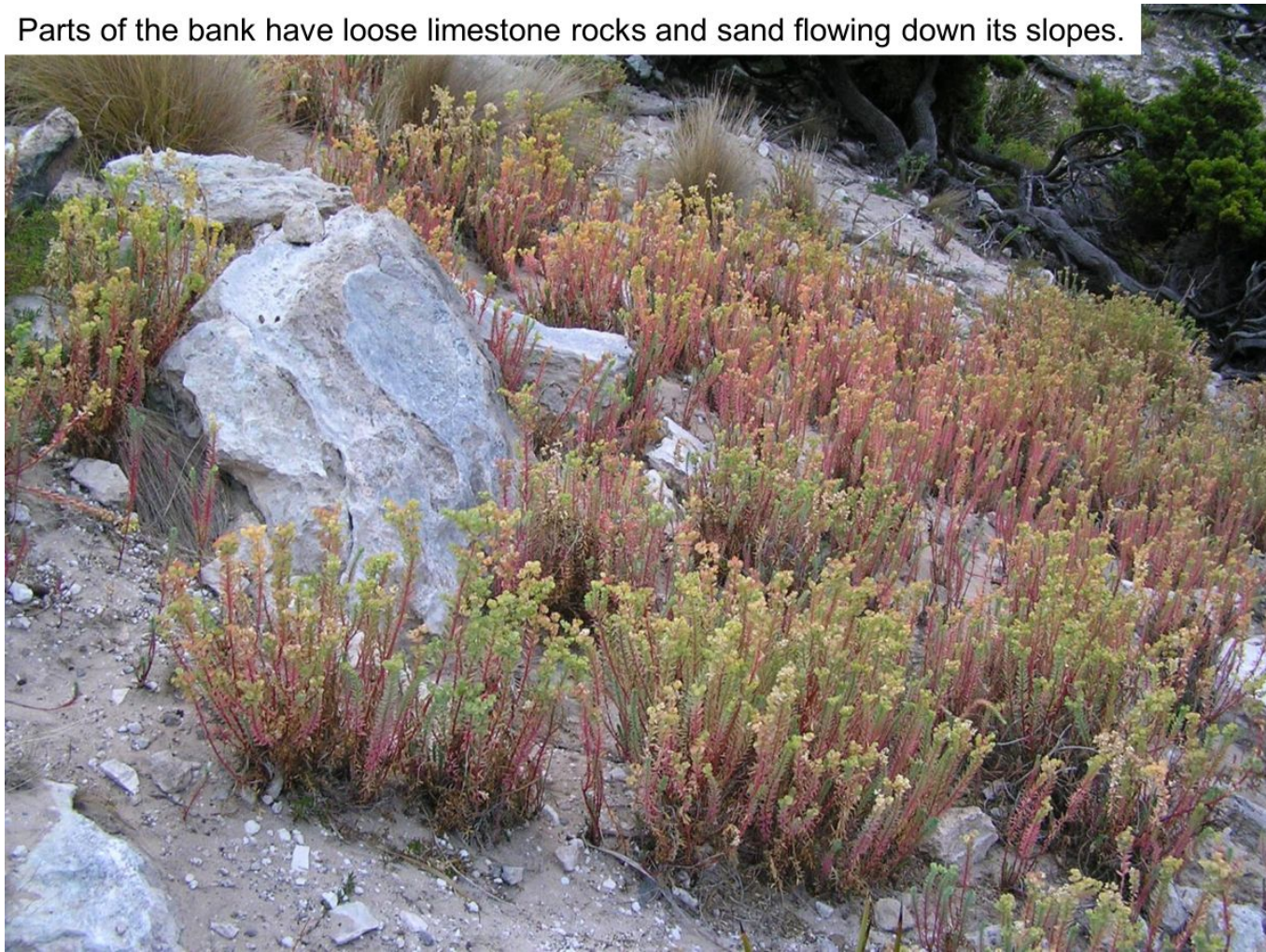
April 2008 primary weeding



April 2010 during maintenance



Parts of the bank have loose limestone rocks and sand flowing down its slopes.





Part of the western end of bank is stable enough to weed

Erosion bars





Wallaby highway

Exclosure built April 2009



The same one, April 2010



April 2010



She oak growing from seed bearing slash and protected from wallaby browsing



Cuttings of grey saltbush planted directly into the bank



Bower spinach cutting struck in pot then planted out and protected



March 2023



The core area of the bank October 2009

“A healthy weed free native vegetation” –
70 years ago – can it be restored?

